



Enroll an iOS Device in Mobile Device Management (Intelligent Hub)

Overview

CNUSD’s Mobile Device Management (MDM) platform installs profiles on your device that configure and maintain settings on your device. MDM helps protect your privacy and the District’s data.

Before you can enroll your iOS device in the MDM service, you will need to install the Intelligent Hub app from the App Store or iTunes. You will need an Apple iTunes account for this. **Backup your device before enrolling!**

This process must be completed before connecting to the CNUSD_BYOD WiFi network

What to expect after you install MDM

It might take a few minutes to install the profiles on your device, so please be patient. When the process is complete, you’ll find MDM profiles installed in **Settings > General > Profiles**

Your device will:

- Require a passcode to unlock. You can change this setting to “Immediately” (recommended), one minute, or five minutes. Go to **Settings > Touch ID & Passcode** and then enter your passcode. Then tap **Require Passcode** and make a selection.
- Time out after a period of inactivity and require a passcode to unlock it. You can change your preferences in Settings for a period of up to five minutes. Go to **Settings > General > Auto-Lock**
- Sync your CNUSD email, contacts, and calendar appointments after installation.
- Require you to enter your CNUSD Active Directory password before you can access your email.
- Check periodically for black-listed applications and to make sure that the device has not been jailbroken
- Display the CNUSD App Catalog and BYOD Self-Service Portal
- Perform otherwise as it did before you installed the MDM

Before you begin

Check that your device is running iOS 10 or later. You cannot enroll a device in MDM if the OS is below iOS 10.

Download the Intelligent Hub App

You must be using your iOS device to begin the enrollment process.

1. [Install the Intelligent Hub](#) on your iOS device. (This must be completed before connecting to the CNUSD WiFi network)

Intelligent Hub
AirWatch, LLC

3.8 ★★★★★
51 Ratings

4+
Age

What's New [Version History](#)

Version 6.0 1w ago

- New User Experience and Icon.
- Extends mobile device management

Enrolling your device in MDM

Authenticate

1. When the app has finished downloading, tap **Open**. You can also open Intelligent Hub from your home screen by tapping the **Intelligent Hub** app icon.

Done View in Store



Intelligent Hub

AirWatch, LLC

OPEN



3.8 ★★★★★

51 Ratings

4+

Age

What's New

[Version History](#)

Version 6.0

1w ago

- New User Experience and Icon

2. At the welcome screen, enter your **District Email Address** and then select Next.
Exp. 113150@students.cnusd.k12.ca.us



Email Address or Server

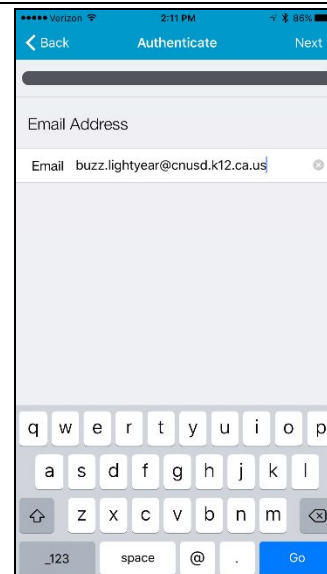
QR Code

Next

3. Enter your CNUSD email address and tap **Go**.

If you did not enter a valid email address, the next screen prompts you for a server and group ID. If this screen displays, enter the following and then tap **Enroll Device**.

- a. **Server:** airwatch.cnusd.k12.ca.us
- b. **Group ID:** byod (this is case sensitive)



4. Enter your district **username** and **password** and then click **Next**.

Username Exp. 113150



Username

Password

Next

5. Tap **Accept** to accept the terms and conditions.



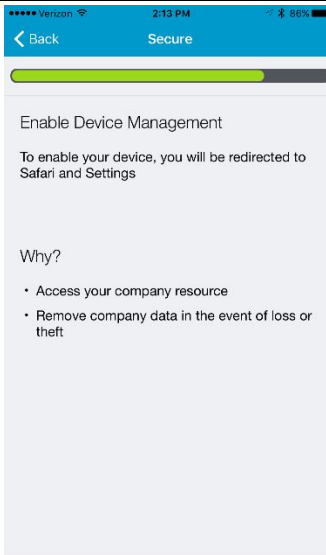
Terms and Conditions

CNUSD respects your privacy, and AirWatch MDM will not collect personal information on the device such as the camera, photos, phone call information, contacts, personal apps, exchanged messages, location, passwords, or social media accounts. Here is what information we collect and why:

- Device and network ID, and information on storage capacity, operating system, carrier, and firmware (to uniquely identify your device to ensure that we're looking at the correct records if it's lost or stolen).
- List of apps installed by MDM, not including your personal apps (needed by AirWatch to confirm whether apps provided by CNUSD have been installed). AirWatch has the capability of listing all installed apps, but we have explicitly disabled that capability.
- Jailbreak or root detection (indicates whether built-in security features have been bypassed. Jailbreak or root detection informs you if these features have been bypassed).

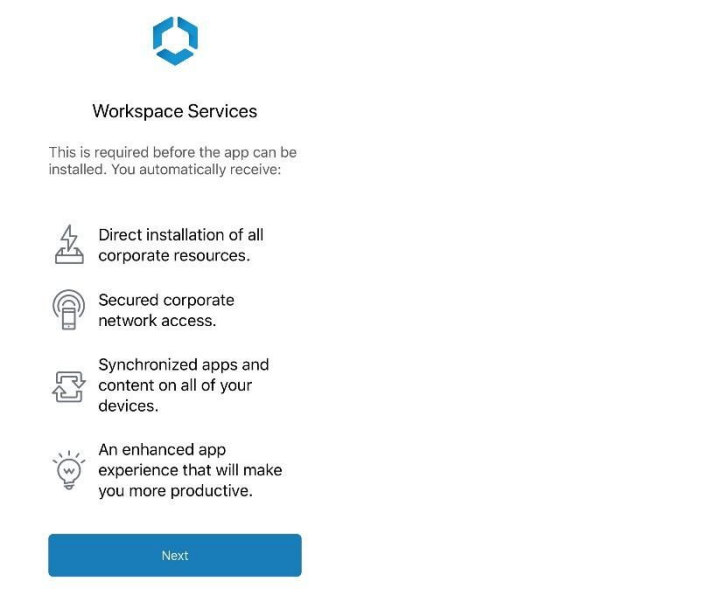
Accept

6. On the Enable Device Management page, tap **Redirect and Enable**

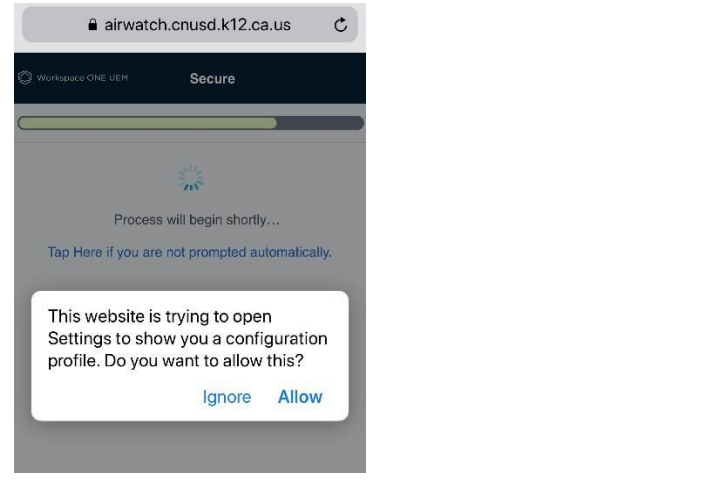


Redirect & Enable

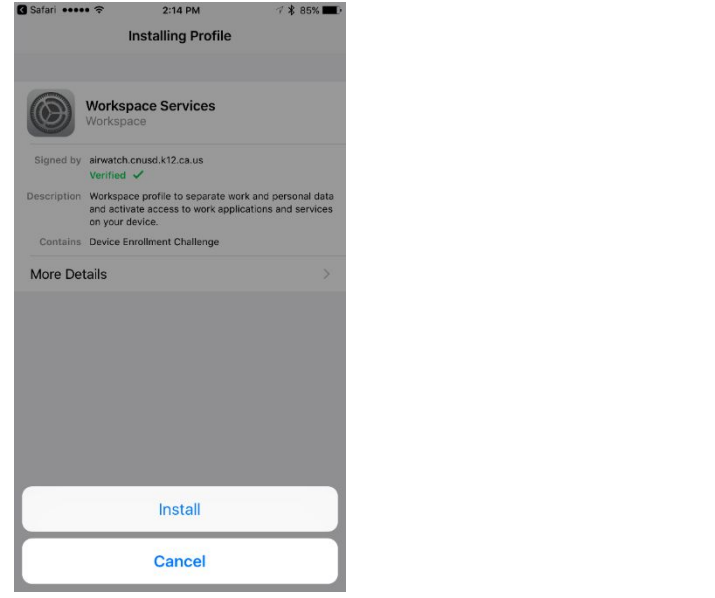
7. Tap **Next** on the page about additional Install Information.
All privacy information regarding the District BYOD network can be [found here](#).

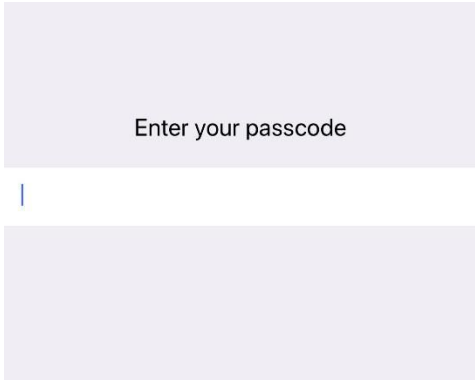
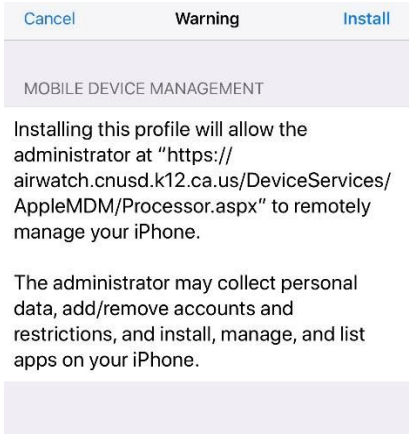
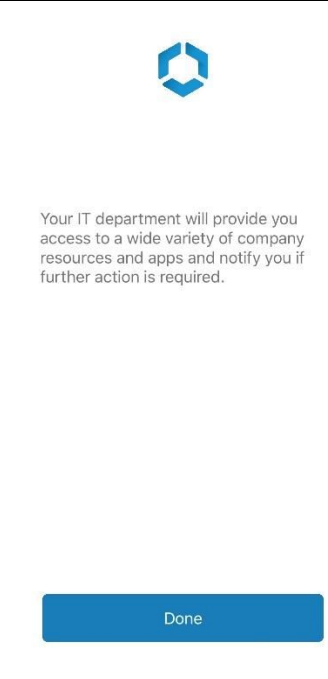


8. **Allow** the configuration profile. You may need to go to **Settings -> Downloaded Profiles**



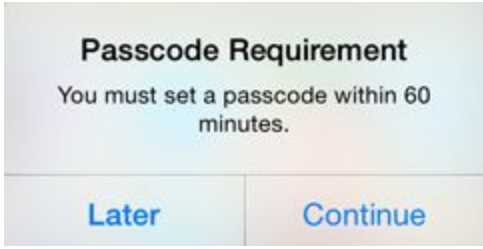

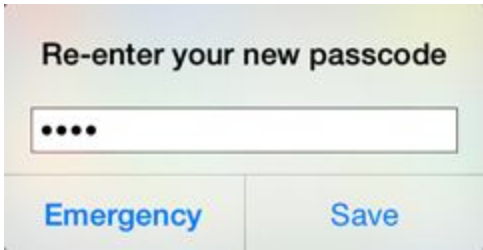
9. Tap **Install**



<p>10. Your phone may ask you for your phone passcode/password</p>	
<p>11. Install the configuration profile</p>	
<p>12. When the profile has finished installing, Intelligent Hub page displays. Tap Done. Then log-in to Intelligent Hub with your Username (exp. 113150) and password. When you arrive on your school campus, select the CNUSD_BYOD Wifi network to get connected :)</p> <p><i>NOTE: If your school does not have the BYOD WiFi option choose the Guest Wifi for student level content filtering</i></p>	

Set a passcode

If you do not already have a passcode on your device, you must set one within 60 minutes after your device is enrolled in MDM. The passcode must be a minimum of four digits.

<p>1. You are prompted to set a passcode if you do not already have one. Tap Continue to set one now.</p>	 <p>The screenshot shows a screen titled "Passcode Requirement" with the text "You must set a passcode within 60 minutes." Below the text are two buttons: "Later" and "Continue".</p>
<p>2. When prompted for a passcode, enter four or more digits/characters and tap Continue.</p>	 <p>The screenshot shows a screen titled "New passcode" with the text "Enter a strong passcode with 4 or more characters." Below the text is a text input field containing four dots and a cursor. At the bottom are two buttons: "Emergency" and "Continue".</p>
<p>3. Re-enter your new passcode and then tap Save.</p>	 <p>The screenshot shows a screen titled "Re-enter your new passcode" with a text input field containing four dots. At the bottom are two buttons: "Emergency" and "Save".</p>

Manage your mobile device

Once your device is successfully enrolled in the Intelligent Hub, you can manage your device in [MyDevice](#). It can take up to 6 hours before your device appears in MyDevice.